

Appendix 5

Priority in REC Selection

INSERTED TEXT

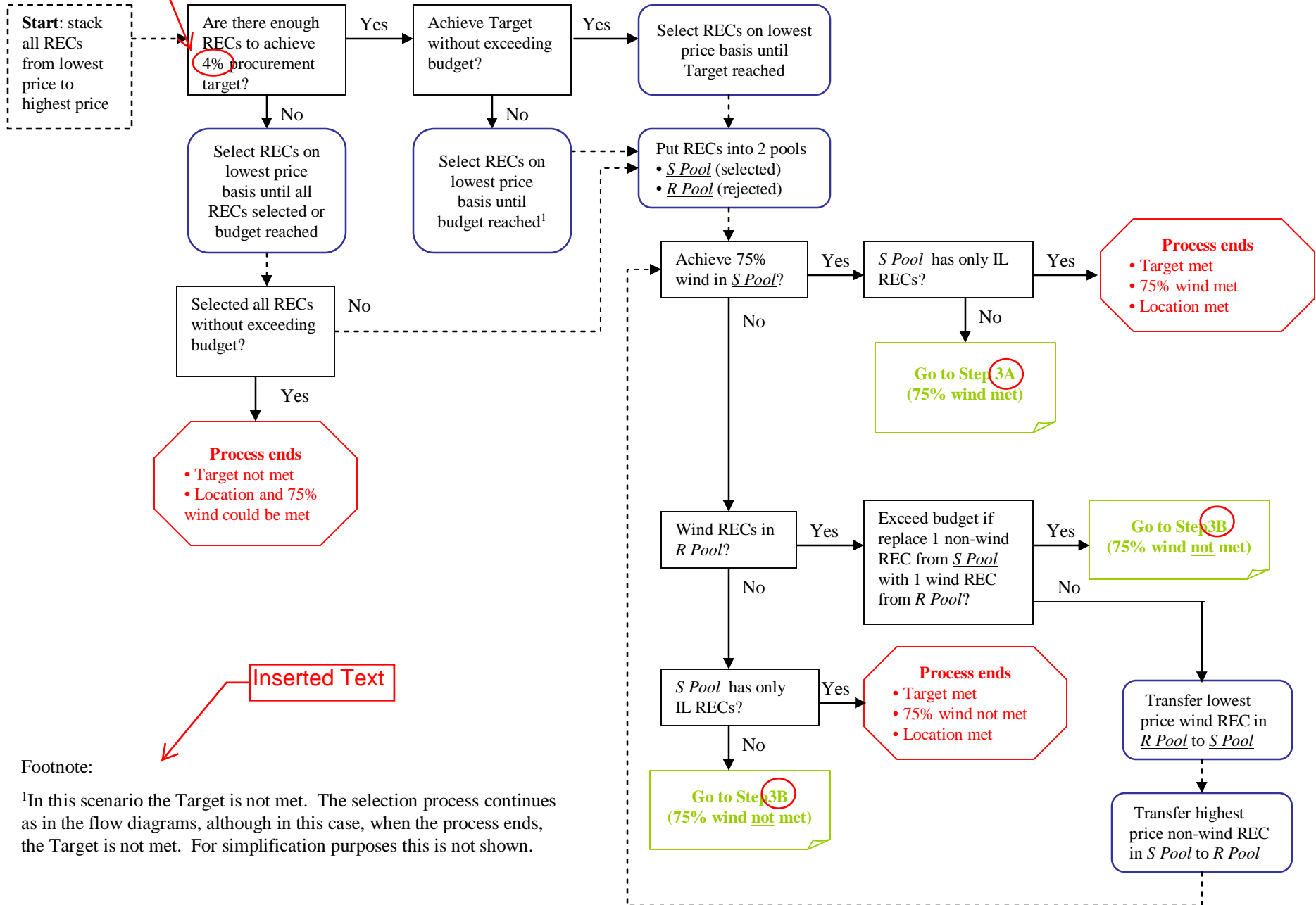
Step 1: Application of Benchmarks

Benchmarks for RECs will be established by the Procurement Administrator, in consultation with the Illinois Power Agency, the Procurement Monitor, and the Illinois Commerce Commission (“ICC”) Staff. The benchmarks are confidential and are subject to review and approval by the ICC.

Bids that fail to meet the benchmarks are eliminated from consideration and are not evaluated.

Updated Text

Step 2: Target and Wind



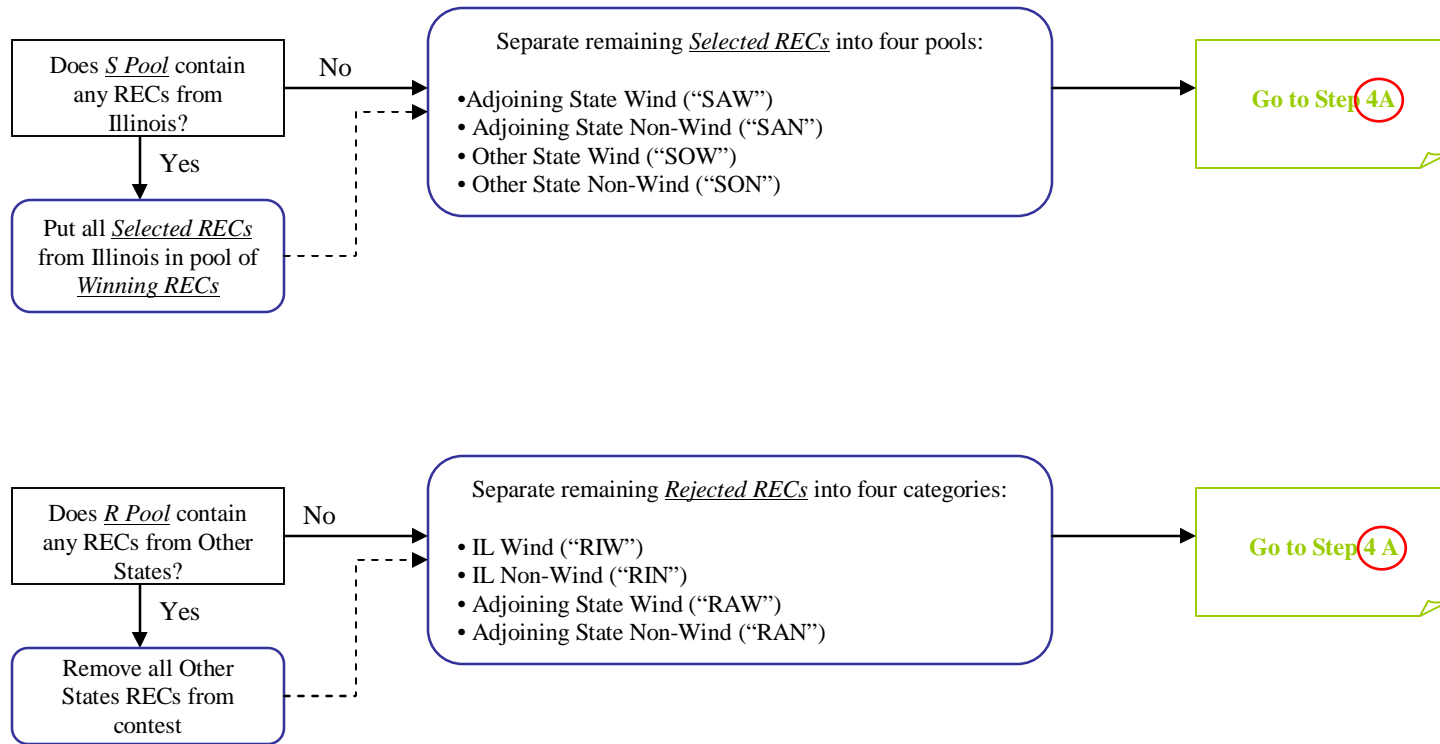
Inserted Text

Footnote:

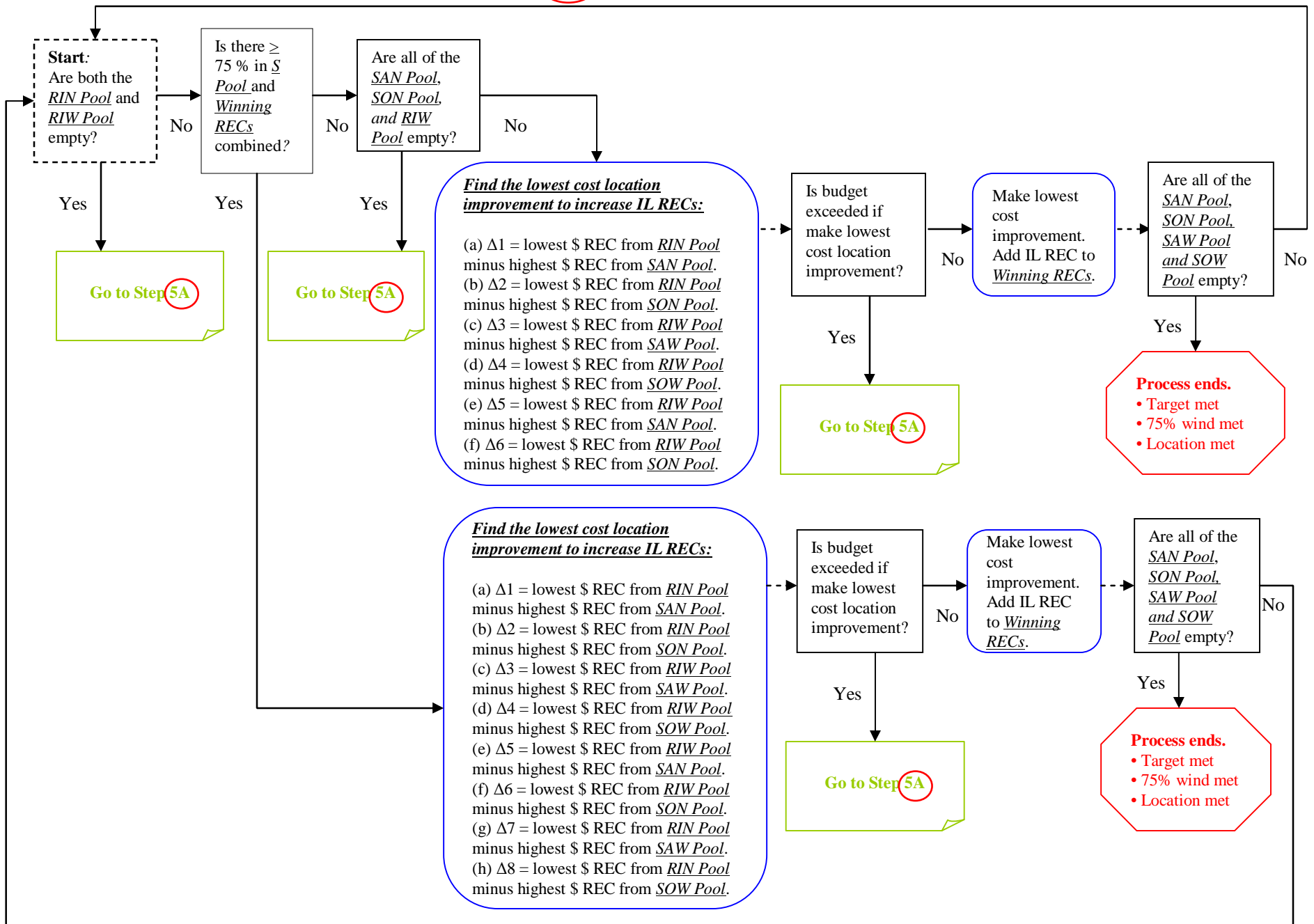
¹In this scenario the Target is not met. The selection process continues as in the flow diagrams, although in this case, when the process ends, the Target is not met. For simplification purposes this is not shown.

Step 3A: Pools for Location Adjustment

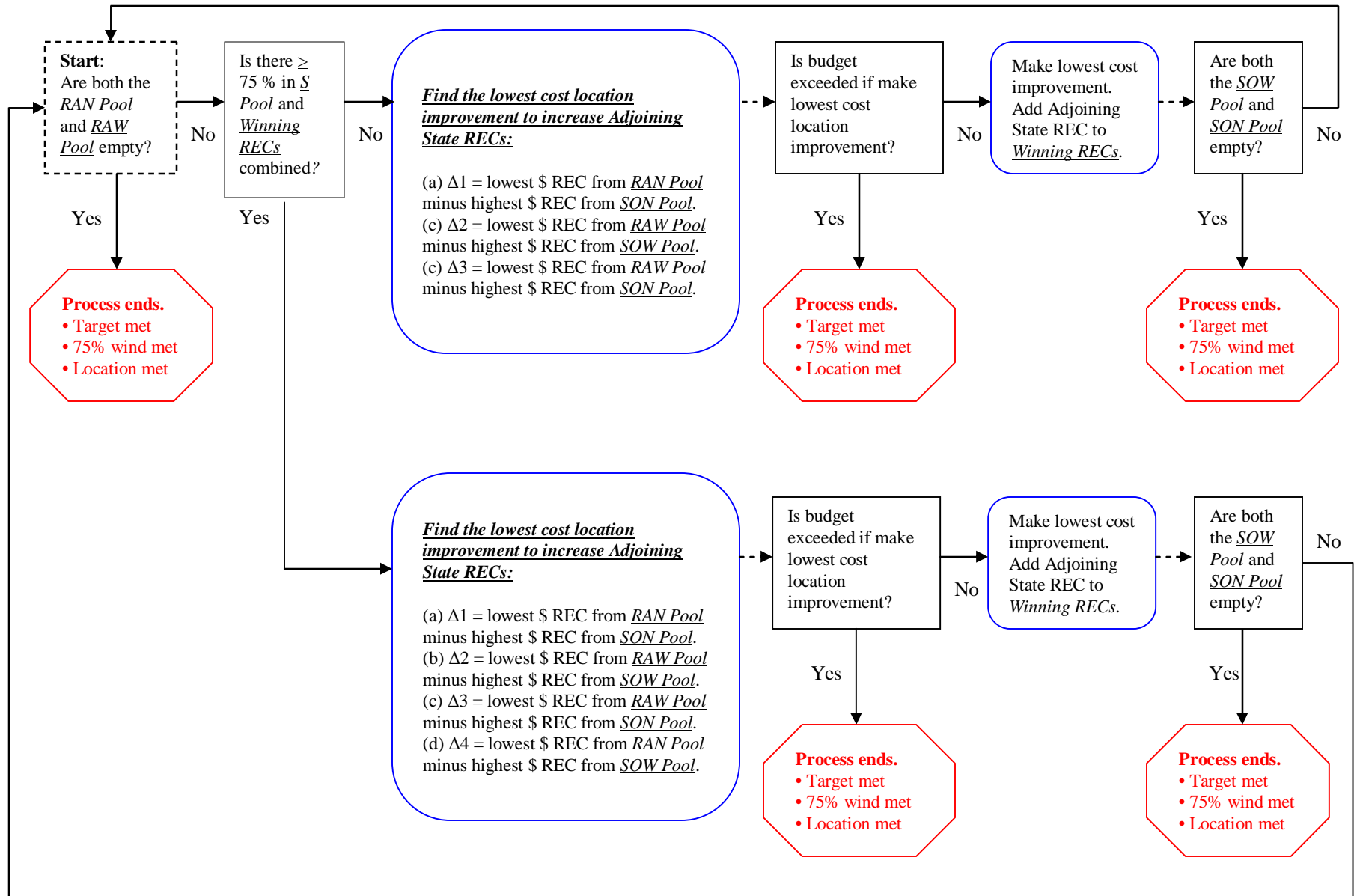
Updated Text



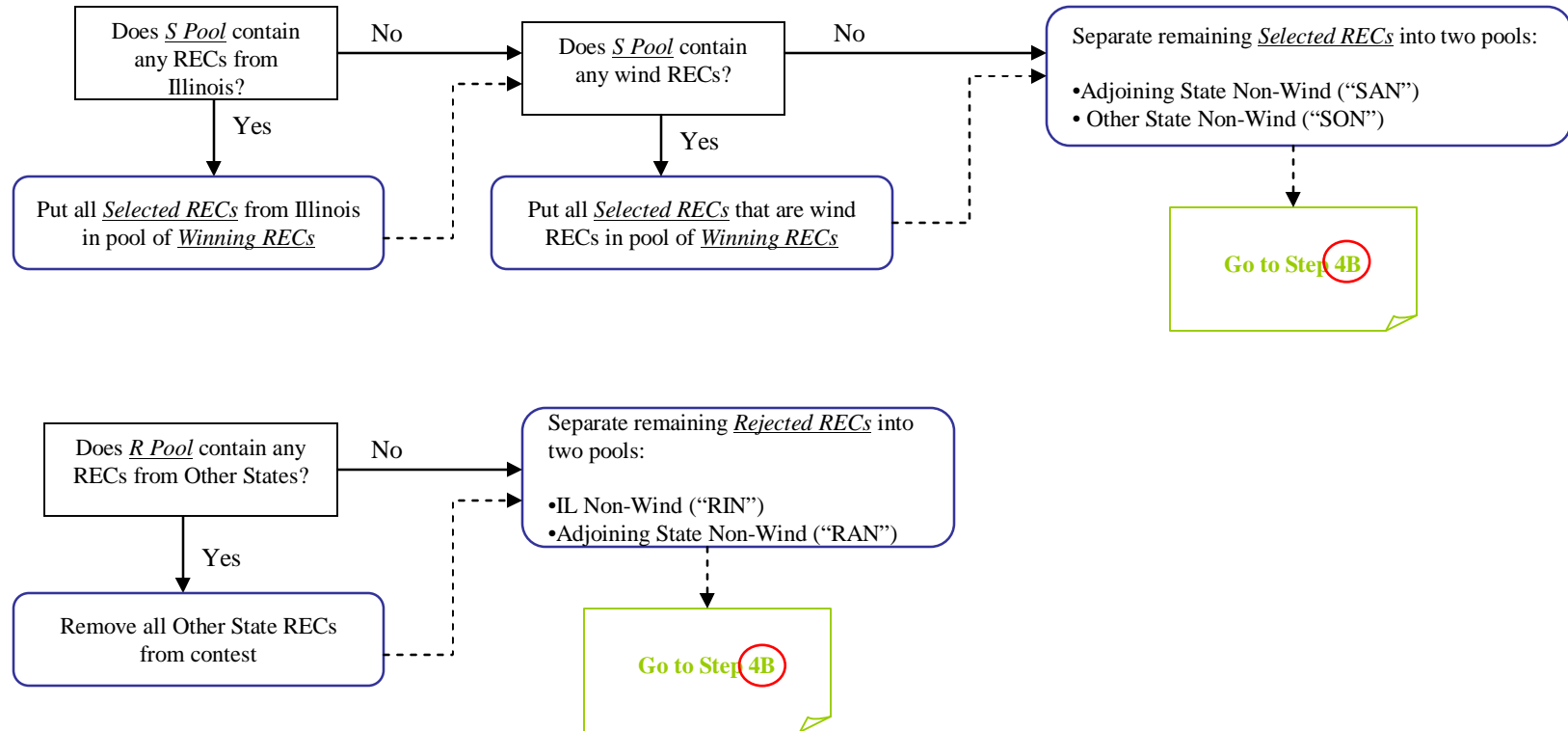
Step 4A: Illinois Adjustment



Step 5A: Adjoining State Adjustment

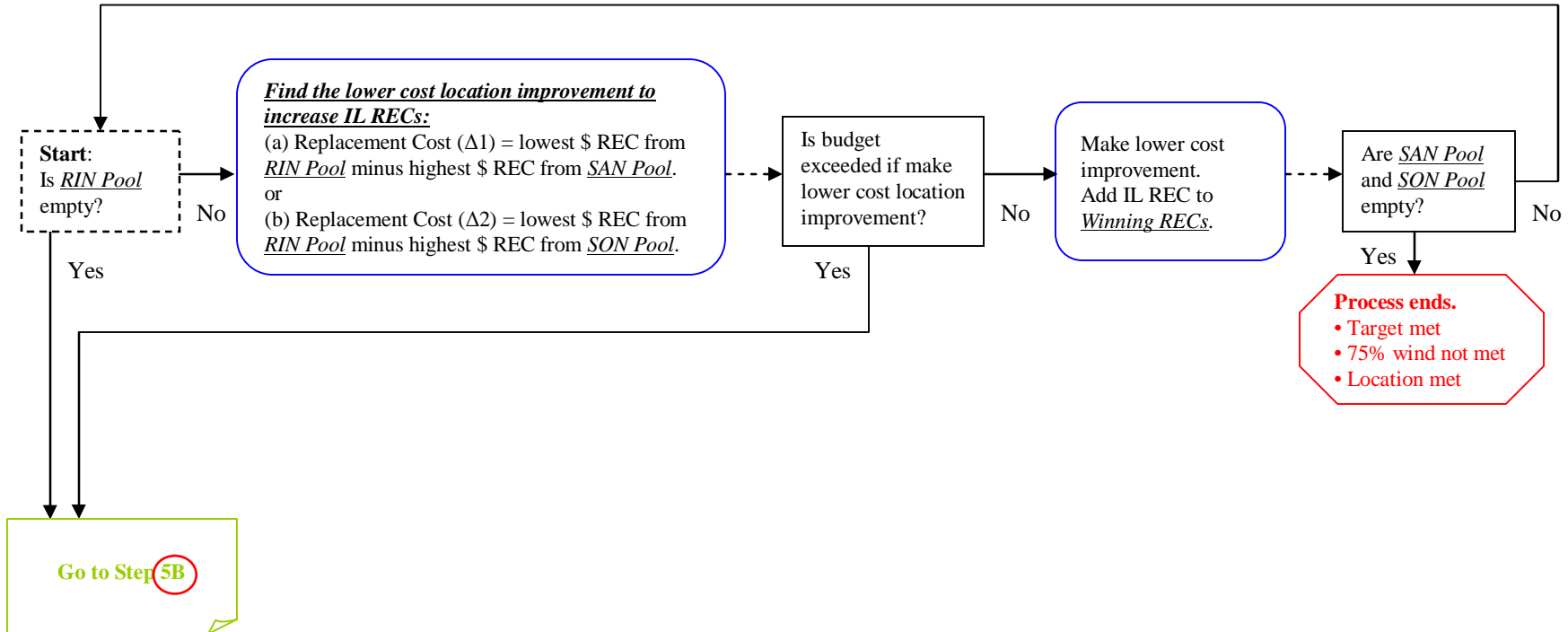


Step 3B: Pools for Location Adjustment (Insufficient Bids to achieve 75% wind)



Updated Text

Step 4B: Illinois Adjustment (Insufficient Bids to achieve 75% wind)



Updated Text

Step 5B: Adjoining State Adjustment (Insufficient Bids to achieve 75% wind)

